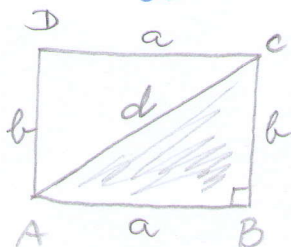


186/1a) pravokotnik

$$a = 12 \text{ cm}$$

$$b = 9 \text{ cm}$$

$$d = ?$$



$$d^2 = a^2 + b^2$$

$$d^2 = 12^2 + 9^2$$

$$d^2 = 144 + 81$$

$$d^2 = 225$$

$$d = \sqrt{225}$$

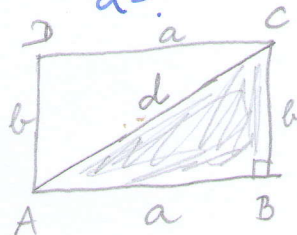
$$d = 15 \text{ cm}$$

c) pravokotnik

$$a = 1,1 \text{ dm}$$

$$b = 6 \text{ dm}$$

$$d = ?$$



$$d^2 = a^2 + b^2$$

$$d^2 = 1,1^2 + 6^2$$

$$d^2 = 1,21 + 36$$

$$d^2 = 37,21$$

$$d = \sqrt{37,21}$$

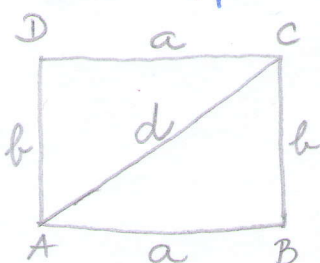
$$d = \underline{\underline{6,1 \text{ dm}}}$$

3. b) pravokotnik

$$a = 10 \text{ cm}$$

$$d = 26 \text{ cm}$$

$$b = ? \quad \sigma, \nu = ?$$



$$b^2 = d^2 - a^2$$

$$b^2 = 26^2 - 10^2$$

$$b^2 = 676 - 100$$

$$b^2 = 576$$

$$b = \sqrt{576}$$

$$b = \underline{\underline{24 \text{ cm}}}$$

$$\sigma = 2a + 2b$$

$$\sigma = 2 \cdot 10 + 2 \cdot 24$$

$$\sigma = 20 + 48$$

$$\sigma = \underline{\underline{68 \text{ cm}}}$$

$$\nu = a \cdot b$$

$$\nu = 10 \cdot 24$$

$$\nu = \underline{\underline{240 \text{ cm}^2}}$$

č) pravokotnik

$$b = 12 \text{ cm}$$

$$d = 3,7 \text{ dm} = 37 \text{ cm}$$

$$\sigma, \nu = ?$$

$$a^2 = d^2 - b^2$$

$$a^2 = 37^2 - 12^2$$

$$a^2 = 1369 - 144$$

$$a^2 = 1225$$

$$a = \sqrt{1225}$$

$$a = \underline{\underline{35 \text{ cm}}}$$

$$\sigma = 2a + 2b$$

$$\sigma = 2 \cdot 35 + 2 \cdot 12$$

$$\sigma = 70 + 24$$

$$\sigma = \underline{\underline{94 \text{ cm}}}$$

$$\nu = a \cdot b$$

$$\nu = 35 \cdot 12$$

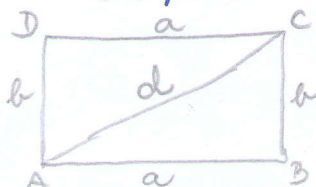
$$\nu = \underline{\underline{420 \text{ cm}^2}}$$

10. pravokotnik

$$a = 2 \text{ dm}$$

$$\nu = 4,2 \text{ dm}^2$$

$$b = ? \quad d = ?$$



$$\nu = a \cdot b$$

$$b = \nu : a$$

$$b = 4,2 : 2$$

$$b = \underline{\underline{2,1 \text{ dm}}}$$

$$d^2 = a^2 + b^2$$

$$d^2 = 2^2 + 2,1^2$$

$$d^2 = 4 + 4,41$$

$$d^2 = 8,41$$

$$d = \sqrt{8,41}$$

$$d = \underline{\underline{2,9 \text{ dm}}}$$